

The Voice of Professional and Backyard Beekeeping

Cowlitz Beekeepers Association Newsletter



Dedicated to Preserving the Honey Bee through Community Action, Awareness and Education

June 2021

Issue 6

Next Meeting:

Where: Anywhere worldwide on your computer via Zoom or in person at the "Sons of Norway" building. 224 Catlin St. Kelso WA.

When: February 16, 2023

Speaker: Paul Maresh

Topic: Expanding the Apiary on a business-like manner

If you live in Cowlitz county or the surrounding area and find honeybees fascinating, then you should consider joining us. Reach us on Facebook by searching for Cowlitz Beekeepers Association or check out our website at:

<https://cowlitzbeekeeping.wixsite.com/website>

Association Officers and Board:

Ken Curtis, President (360) 261-2795 or
cowlitzbeekeepers@gmail.com
Al Wilmoth, V. President (360) 673-8787
Zenobia Scott, Secretary (360) 425-2314
Zebscott56@gmail.com
Barbara Skreen, Treasurer
Elizabeth Peters, Trustee (360) 241-6954
Dave Scott, Trustee (360) 425-2314
Ray Davis, Trustee (360) 431-2882
Anna Pitkin, Trustee
pitkin.anna@yahoo.com

Handmade Proud:

Looking to buy new woodenware at reasonable prices?

- Bottom Boards - Top Covers - Inner Covers - Hive Boxes and more...

Contact **Gerry Herren**

Ph. (360) 355-0051
Swarmchaser40@gmail.com

Nuc Sales: We will be selling nucs to club members. The cost of each nuc is \$160. Order forms and club membership forms are available on the Cowlitz Beekeepers Website (<https://cowlitzbeekeeping.wixsite.com/website>). Payments must be received by Barbara Skreen no later than March 28th. Nucs will be available for pickup in Longview, WA near the end of April (will send out pickup date as soon as known).

**Make check payable to:
Cowlitz Beekeepers Association
Please note how many nucs you are
ordering on the check**

**Send to address:
Cowlitz Beekeepers Association
C/O Barbara Skreen
801 Eufaula Heights Road
Longview WA 98632**

Nucs can also be ordered and paid for at monthly meetings.

Nucs can only be purchased by CBA and CCOB club members in good standing.

The members of the board have purchased a computer for club use.

Our Zoom Meetings

Zoom video conferencing is celebrated for its ease of use, high quality video and audio, and collaboration facilities such as text chat and screen sharing. All you need is a computer or smartphone with speakers, a microphone, and a camera. Join us at

our next meeting. If you are not a member, but would like to attend a meeting request the code to cowlitzbeekeepers@gmail.com .

12 plants to Entice Pollinators to Your Garden:

OSU Extension Service: <https://extension.oregonstate.edu/news/12-plants-entice-pollinators-your-garden>

Add some flower power to your landscape to bring in the buzz of pollinators to your yard. An abundance of flora is one the best ways to promote bee diversity to your garden. A showy blend of flowers is also attractive to birds and butterflies.

So which flowers should you plant. "Gail Langolletto", the statewide coordinator for the Oregon State University Extension Service's Master Gardener program recommends the following:

- **Lavenders:** Bumblebees, carpenter bees, digger bees and large and small leafcutting bees collect the nectar of this evergreen shrub.
- **Pacific or coast rhododendron:** Larval host for brown elfin and gray hairstreak butterflies. Hummingbirds, bees and Western tiger swallowtails collect the nectar of this evergreen shrub. Native to the Pacific Northwest.
- **Blueblossom:** Larval host for pale swallowtail, California tortoiseshell and echo blue butterflies. Bumblebees, carpenter bees, honey bees, digger bees and a variety of small native bees collect the nectar of this evergreen shrub.
- **Ocean spray:** Larval host for spring azure, brown elfin and Lorquin's admiral butterflies. Bumblebees and a variety of small native bees collect the nectar of this deciduous shrub.
- **Serviceberry:** Hummingbirds, bees and butterflies collect the nectar of this deciduous shrub. Larval host for Weidemann's admiral butterflies. Native to the Pacific Northwest.
- **Russian sage:** Honey bees, small carpenter bees and leafcutting bees collect the nectar of this perennial garden plant. The nectar also attracts hummingbirds.
- **Red-flowering currant:** Important nectar source for early-season butterflies. Nectar also attracts hummingbirds. Perennial that is a native to the Pacific Northwest.
- **Zinnias:** A wide array of hummingbirds, butterflies and bees collect the nectar. Annual garden plant.
- **Sunflower:** Longhorn bees, sweat bees, leafcutting bees and bumblebees collect the pollen and nectar of this annual.
- **Salal:** Larval host for spring azure butterflies. Bees collect the nectar on this groundcover. Native to the Pacific Northwest.
- **Catmint:** Honey bees, bumblebees, carder bees and mason bees collect nectar and pollen from this perennial.
- **Milkweed:** Monarch butterflies collect nectar and pollen and lay their eggs on this perennial wildflower. Nectar also attracts hummingbirds. Native to the Pacific Northwest.

Keep in mind when planting a pollinator garden, bees forage for nectar and pollen better in warm, sunny spots.. Don't forget to provide water for your bees.

Butterflies are dependent on native plants for reproduction. For example migratory Monarch butterflies cannot complete their lifecycle without native milkweed.

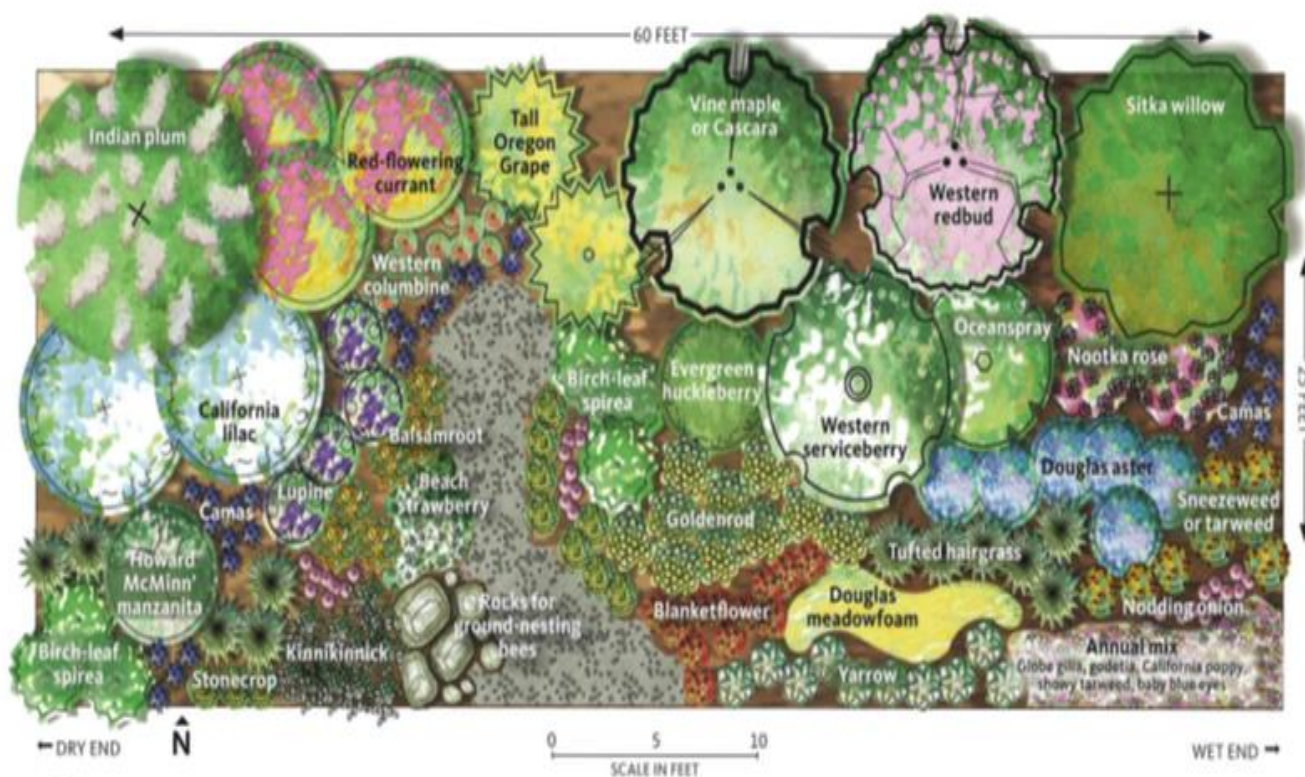
In addition to native plants consider exotic plants in a pollinator-friendly garden. Several studies have found that the exotics catmint and Russian Sage are some of the most attractive plants for bees. Adult bees are more indiscriminate than originally thought and have been found to feed on pollen and nectar from exotic plants regularly.

(OSU Extension Service, 2020)

The following illustrations demonstrate a pollinator garden plan idea, as well as a list of native pollinator plants:

NATIVE PLANTS for POLLINATORS

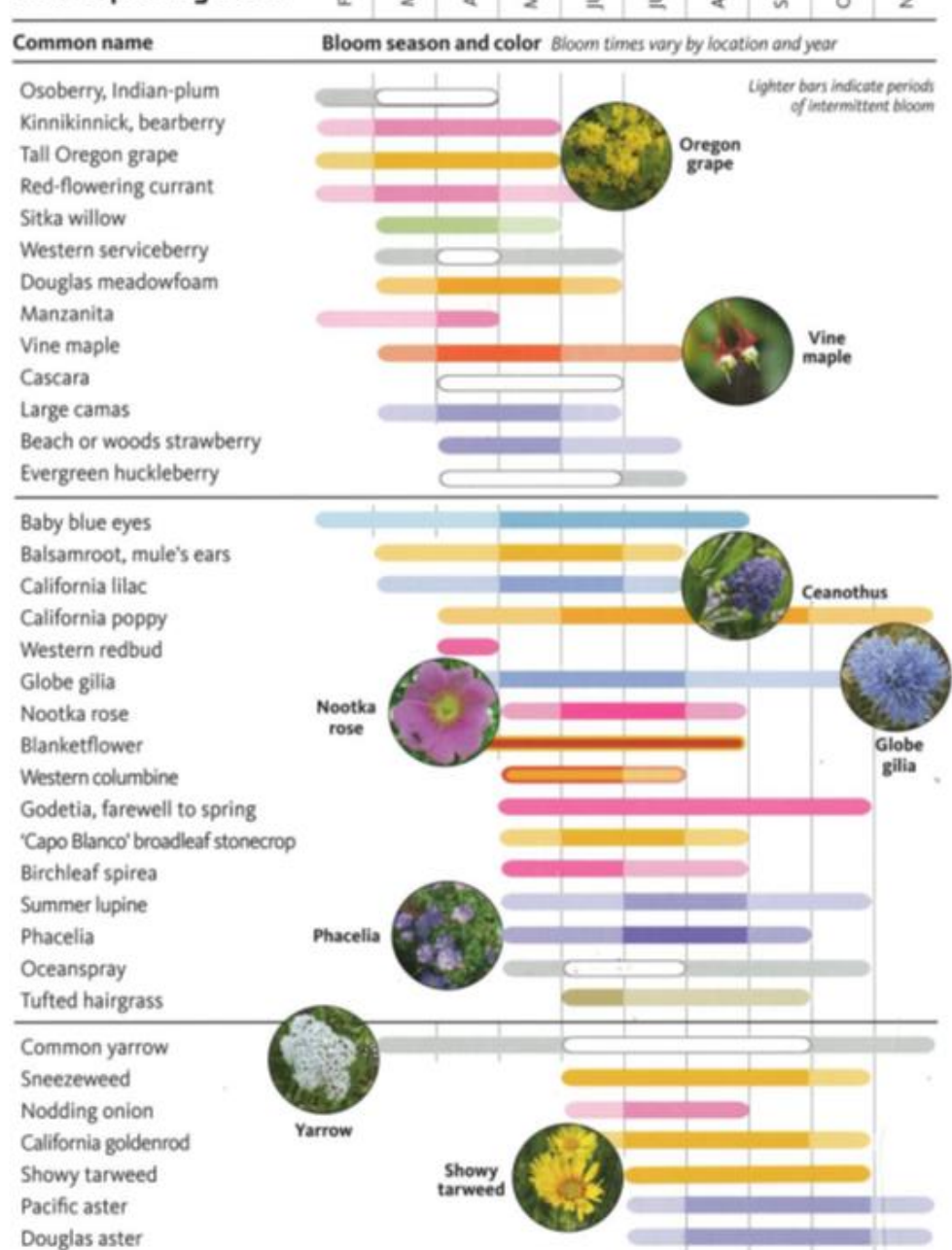
WEST OF THE CASCADES



LEARN MORE: Enhancing Urban and Suburban Landscapes to Protect Pollinators
<https://beav.es/forthebees>
agr.wa.gov/pollinators

EM 446 • June 2022

Native plant garden



Oregon State University
Extension Service

© 2020 Oregon State University. Oregon State University Extension Service prohibits discrimination in all its programs, services, activities, and materials on the basis of race, color, national origin, religion, sex, gender identity (including gender expression), sexual orientation, disability, age, marital status, familial/parental status, income derived from a public assistance program, political beliefs, genetic information, veteran's status, reprisal or retaliation for prior civil rights activity. (Not all prohibited bases apply to all programs.)

Cowlitz Beekeepers Association

Monthly Meeting

January 19, 2023

Meeting came to order at 7:04 p.m.

In attendance: in person 17, via Zoom 7, total 24.

Our guest speaker was Bill Holmes. He talked about winter feeding of bees.

Nucs - Foothills Honey Company will be getting in touch with Ken when we can place our order for nucs. Nucs will cost \$160 this year, which includes the delivery fee. The criteria to purchase a nuc is you have to be a member of the Cowlitz Beekeepers Association.

The Beginning Beekeeper Course will begin Monday, February 13, 2023 and end March 13, 2023. It is a four-week course with a one-week break. Ken Curtis and Al Wilmoth will conduct the course. It will be held at the Cowlitz Training Center adjacent to the Hall of Justice. The cost of the course is \$40. This includes a manual, training, and certificate. If you wish to take this course, please contact Gary Fredricks at: WSU Extension/ Cowlitz County, 304 Cowlitz Way, Kelso, WA 98626; 360-577-3014, Ext.3; garyf@wsu.edu. Hopefully we will be able to have an apprentice course.

Just a reminder, please renew your apiary registration for the State of Washington. It is due by April 1st.

Meeting adjourned at 9:00 p.m.

Minutes taken by,

Zenobia Scott, Secretary